

2009 Program California Standards Test Results - Standardized Testing and Reporting (STAR)

Comparison Between Districts, Tehama County and State of California

Data Source: California Department of Education (cde.ca.gov)

English-Language Arts - Percentage of Students Scoring at Proficient and Above

Grade	Antelope	Bend	CUESD	CUHSD	Elkins	Evergreen	Flournoy	Gerber	Kirkwood	Lassen View	LMUSD	Manton	Mineral	Plum Valley	RBUESD	RBJUHS	Reeds Creek	Richfield	SRDC	Tehama County	California
2	59%	80%	55%		0%	78%	100%	39%	61%	44%	50%	0%	100%		48%		67%	61%		55%	53%
3	55%	10%	37%			66%	60%	30%	29%	42%	54%	50%		100%	51%		28%	37%		45%	44%
4	60%	50%	48%			78%	75%	47%	63%	76%	81%	0%	100%	0%	55%		64%	75%		59%	61%
5	50%	34%	43%		100%	59%	100%	33%	100%	63%	34%	100%		33%	47%		50%	73%		48%	54%
6	65%	55%	42%		50%	60%	40%	45%	33%	58%	46%	67%	25%	0%	54%		66%	66%	13%	53%	52%
7	64%	60%	46%			74%	0%	56%	63%	78%	66%	50%	40%	34%	48%		45%	77%	61%	55%	54%
8	55%	66%	43%		25%	70%	100%	29%	83%	77%	49%	58%	28%	0%	48%		32%	53%	25%	50%	48%
2-8 Total	58%	52%	45%		38%	69%	68%	40%	60%	62%	53%	43%	32%	35%	50%		51%	63%	37%	56%	53%
9				42%							54%		31%			49%			54%	47%	50%
10				36%							48%		14%			33%			18%	34%	43%
11				29%							44%		11%			32%			30%	31%	40%
9-11 Total				35%							49%		17%			38%			34%	37%	45%

Mathematics - Percentage of Students Scoring at Proficient and Above

Grade	Antelope	Bend	CUESD	CUHSD	Elkins	Evergreen	Flournoy	Gerber	Kirkwood	Lassen View	LMUSD	Manton	Mineral	Plum Valley	RBUESD	RBJUHS	Reeds Creek	Richfield	SRDC	Tehama County	California
2	78%	80%	70%		0%	83%	100%	64%	77%	70%	79%	33%	100%		62%		50%	82%		69%	63%
3	64%	10%	63%			81%	60%	44%	57%	69%	82%	50%		100%	69%		36%	80%		67%	64%
4	57%	50%	58%			85%	0%	43%	82%	87%	90%	0%	50%	0%	64%		71%	85%		66%	66%
5	56%	67%	54%		100%	65%	100%	42%	83%	78%	53%	67%		50%	57%		21%	73%		58%	57%
6	33%	78%	29%		50%	49%	40%	43%	44%	70%	48%	0%	0%	0%	51%		55%	63%	0%	43%	49%
7	52%	50%	28%			72%	0%	39%	50%	85%	63%	25%	10%	67%	53%		36%	77%	39%	50%	43%
General Mathematics	3%	50%	0%		50%	59%		33%		0%	42%		17%	75%	25%			0%		36%	30%
Algebra I	30%	100%	9%			96%	100%	53%	67%	68%	50%	29%	10%		37%		14%	48%	0%	34%	48%
2-8 Total	50%	55%	44%		50%	73%	50%	45%	67%	74%	65%	27%	56%	67%	57%		40%	72%	16%	55%	54%
General Mathematics				9%									17%			17%				13%	17%
Algebra I				12%							30%		10%			15%			0%	15%	17%
Geometry				11%							31%					29%			0%	23%	26%
Algebra II				5%							10%					26%				18%	28%
Summative High School Math				8%							50%		0			52%				36%	50%
Integrated I																			5%	5%	11%
9-11 Total				10%							28%		12%			23%			3%	16%	24%

2009 Program California Standards Test Results - Standardized Testing and Reporting (STAR)

Comparison Between Districts, Tehama County and State of California

Data Source: California Department of Education (cde.ca.gov)

Science - Grade Level Tests

Percentage of Students Scoring at Proficient and Above

Grade	Antelope	Bend	CUESD	CUHSD	Elkins	Evergreen	Flournoy	Gerber	Kirkwood	Lassen View	LMUSD	Manton	Mineral	Plum Valley	RBUESD	RBJUHSD	Reeds Creek	Richfield	SRDC	Tehama County	California
5	54%	50%	24%		100	58%	100%	28%	100%	66%	24%	67%		0%	45%		50%	50%		42%	49%
8	56%	44%	58%		0%	78%	100%	58%	83%	77%	61%	43%	28%	0%	54%		32%	56%	20%	57%	56%
10 (Life Science)				36%							55%		13%		47%				27%	42%	44%
Science - EOC				35%							42%		33%		45%				35%	41%	36%

History - Social Science

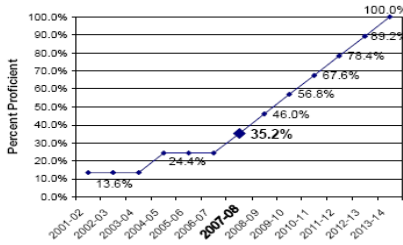
Percentage of Students Scoring at Proficient and Above

Grade	Antelope	Bend	CUESD	CUHSD	Elkins	Evergreen	Flournoy	Gerber	Kirkwood	Lassen View	LMUSD	Manton	Mineral	Plum Valley	RBUESD	RBJUHSD	Reeds Creek	Richfield	SRDC	Tehama County	California
8	35%	44%	42%		0%	67%	100%	39%	83%	48%	44%	43%	28%	0%	29%		19%	43%	41%	40%	42%
11 (U.S. History)				40%							40%		16%		33%				22%	35%	38%
World History				37%							53%		4%		40%				30%	38%	44%

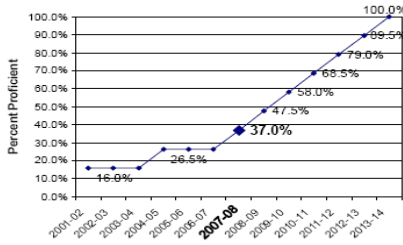
AYP Targets, 2002-2014

Elementary Schools and Districts

English-Language Arts



Mathematics

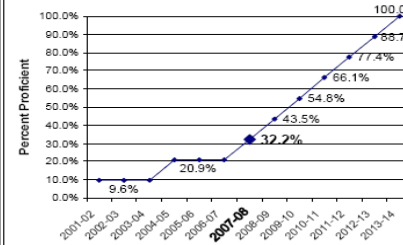


High School and HS Districts

English-Language Arts

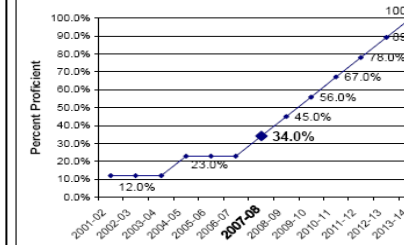


Mathematics



Unified School Districts

English-Language Arts



Mathematics

